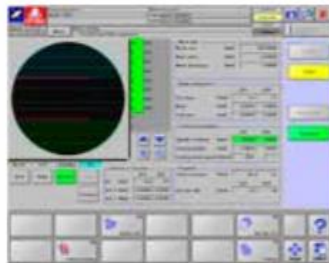


Semi-Auto Dicing Machine

SS20

Main Features

- 1 Accommodates various types of workpieces as standard option:
1: 12-inch frame
2: 250 * 250 mm workpiece
- 2 Standard Spindles up to 60,000 rpm
Option: High speed spindle 80,000 rpm
High power spindle 2.2 kW(30,000 rpm)
- 3 Enhanced throughput
X axis 800mm/sec, Y axis 300 mm/sec, and Z axis 80 mm/sec
- 4 17" LCD touch panel and new GUI (Graphical User Interface) with simple layout and large touch-buttons allow users' interactive operation
- 5 Easy and simple Kerf check function (AI kerf check function)
- 6 Stores over 10,000 recipes
- 7 USB port as standard option (USB memory device can be used as external memory)
- 8 Ease-of-maintenance
Wide maintenance door and front-side accessibility allows easy routine maintenance



▲ New GUI

Specifications

Max. work size	Φ 8inch, □ 250 mm	
Max. number of frames	12 inch	
Spindle	Rotation	60,000 min-1
	Max. blade diameter	Φ 60 mm (2-Inch)
	Rated Output	1.8 kW
X axis	Available cutting range	260 mm
	Max. Speed	800 mm/sec
Y axis	Available cutting range	260 mm
	Max. Speed	300 mm/sec
	Accuracy	0.002 mm / 260 mm
Z axis	Stroke	35 mm
	Max. Speed	80 mm/sec
	Repeatability	0.001 mm
θ axis	Range of rotation	380°
Misc	Voltage	3 Phase AC200 to 220 V ±10 % (Transformer adoptable)
	Power consumption	4.0 kVA(MAX)
	Air pressure	0.55 to 0.7MPa
	Avg. Air consumption	180 L/min(0.55 MPa)
	Cutting Water, and others (pressure)	0.3 to 0.5 MPa
	Cutting Water, and others (Max Flow)	2.0 L/min
	Cooling Water (pressure)	0.3 to 0.5 MPa
	Cooling Water (Max Flow)	1.9 L/min(0.3 MPa)
Exhaust	5 m ³ /min more	
Size (W*D*H)	890 mm×1,000 mm×1,560 mm	
Weight	792 kg	